

ACC SURAKSHA THIN BED JOINTING MORTAR (TBJM) 105

ACC Suraksha TBJM 105 is a carefully proportioned cementitious mixture that high quality and well graded sand, ACC Cement and special additives, which is used for fixing AAC / CLC / Fly-ash blocks etc. It is a self-curing polymer modified dry mortar



KEY FEATURES

- Ready to use, only water to be added
- Better bond than conventional cement based mortar
- Faster to apply due to good spreadable properties
- High strength & water retention properties

STANDARDS

ASTM C 1660

TECHNICAL PROPERTIES

- Mixed density : 1.60-1.80 Kg/ltr
- 28 day comprehensive strength : 5-7Mpa
- Pot life : 120-180 minutes
- Bulk density : 1.40-1.60Kg/ltr
- Pull-out bond strength : $\geq 0.5\text{Mpa}$
- Water-Powder ratio : 22-25%

| Parameter | | Value |
|----------------------------|------------------------|--------------------------|
| Splitting Tensile Strength | Dry condition (28days) | $\geq 0.35\text{N/mm}^2$ |

USES & APPLICATIONS

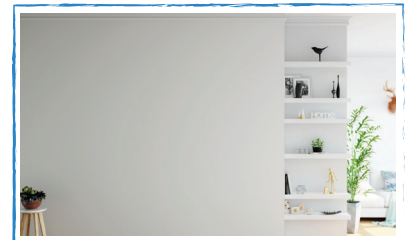
All kinds of Block Masonry Jointing works & all special architectural bricks jointing works.



• AAC Blocks



• All special brick | block Masonry works



• Acoustic Separating | Party Walls | Flanking Walls

ADVANTAGES

- High quality & Easy storage
- Superior bond & Self curing
- Higher productivity & Saves time
- Eco Friendly product

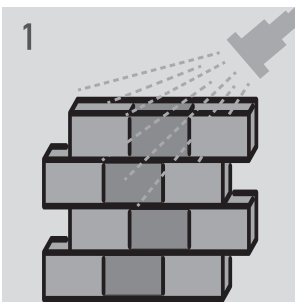
PACKAGING, SHELF LIFE & STORAGE

- Available in 40kg Ad Star bag
- 6 months from the date of manufacturing
- Store in a dry place away from moisture

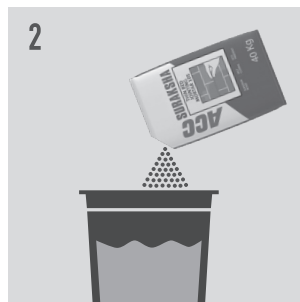
COVERAGE

A 40kg bag of ACC Suraksha TBJM 105 covers ~110-120 sq. ft. at coverage of 3 mm thickness. Coverage depends upon quality and nature of substrate being used

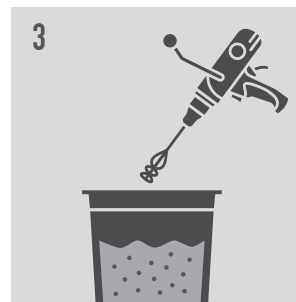
SURFACE PREPARATION, MIXING & APPLICATION



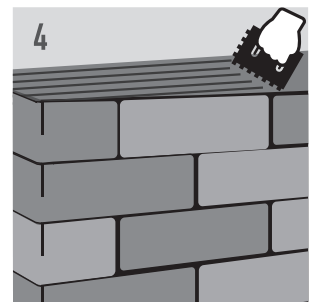
1
AAC/CLC/Fly ash blocks should be cleaned well and the surface needs to be pre-wetted with clean water.



2
Pour required quantity of ACC Suraksha Thin Bed Jointing Mortar 105 into water (22-25%) to get desired consistency.



3
For mixing use spiral mixer at low speed in a clean bucket. Mix well to obtain a lump-free smooth paste. After mixing leave the mix for 5 minutes.



4
Briefly stir the mixture before application. Apply ACC Suraksha Thin Bed Jointing Mortar 105 with a suitable notch trowel on the surface.

SAFETY INSTRUCTION

- Use proper PPE's while using this product to avoid any kind of respiratory issues or skin irritation. In case of contact with eyes, rinse with plenty of water
- Contact Doctor immediately
- Keep out of reach of Children

Disclaimer: All the above mentioned in this brochure is to be treated as general guidance only. Specific product technical advice regarding its usage & test data should be sought for based on different conditions. An experienced technical advisory team is available to give technical details upon request. For more details contact below

Marketed by: ACC LIMITED, 121 M.K. Road, Mumbai 400020,

Contact : Customer Care Manager | Phone : 1800 1033 444 | Email: acchelp@acclimited.com